

# National Center for Interprofessional Education and IPE at NWHHSU



**Michael Wiles, DC, MEd, MS, FCCS(C)**  
Provost and Vice President for  
Academic Affairs

**Dale Healey, DC, PhD**  
Dean College of Undergraduate  
Health Sciences

The center is housed at the University of Minnesota and is a public-private partnership created in October 2012 through a cooperative agreement with HRSA and four private foundations:


1. Josiah Macy Jr. Foundation,
2. Robert Wood Johnson Foundation,
3. Gordon and Betty Moore Foundation
4. John A. Hartford Foundation.

By aligning the needs and interests of education with health care practice, the Center aims to create a new shared responsibility - the “Nexus.”


The Nexus is the shared ground, shared conversation and shared language that creates true collaboration between education and practice.


Goal of the Nexus is: better care, added value and healthier communities (i.e. the triple aim)


National Center for





Interprofessional Practice and Education


Search 


 Log In / Create Account


About Us 


Learn About the Nexus 



Join Us 

Research and Evaluation 

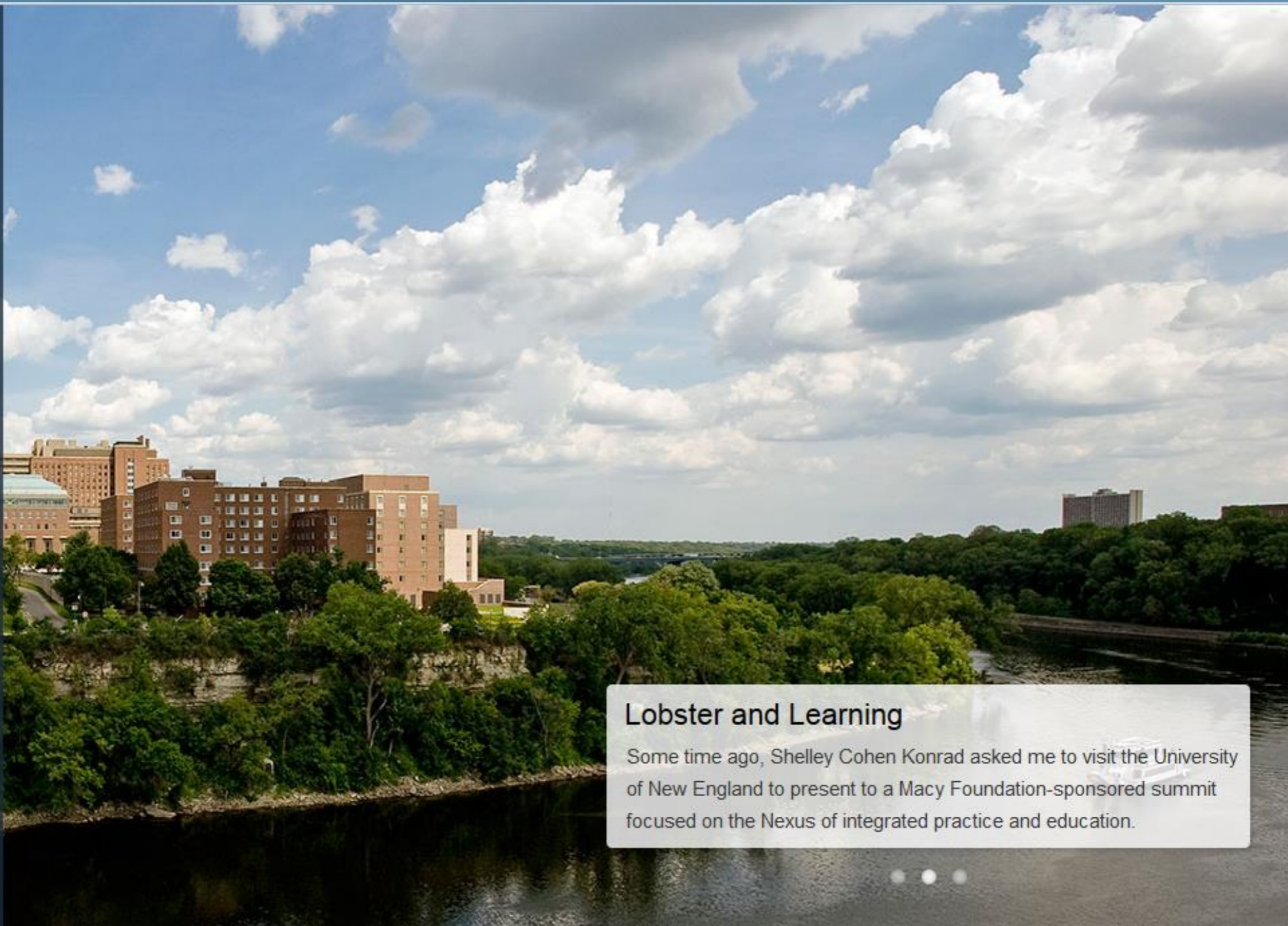
Community and Resources 



Request a Speaker

News

Events



**Lobster and Learning**

Some time ago, Shelley Cohen Konrad asked me to visit the University of New England to present to a Macy Foundation-sponsored summit focused on the Nexus of integrated practice and education.



On May 22, Mike Wiles and Dale Healey attended an open house for the NCIPE to learn more about the resources and opportunities available.

The meeting consisted of briefings by:

- Barbara Brandt, PhD, Director,
- Frank Cerra, MD, Senior Advisor and Interim Deputy Director
- Other members of the NCIPE team

The following slides present the five lessons we learned from the open house about the future of IPE and team-based care.

# 1. IPE and Team Care is here to stay

- Lip service to IPE is changing to action – IPE and team-based care will soon be the norm.
- Accreditation Agencies are incorporating IPE into competencies.
- Patients, families and communities are increasingly being part of education, not just delivery.
- Education and delivery will be jointly managed at the local level through team-based education and care.
- National Center research will show what teams work best.

## 2. Payment Models Changing to Support IPE and Team-based Care

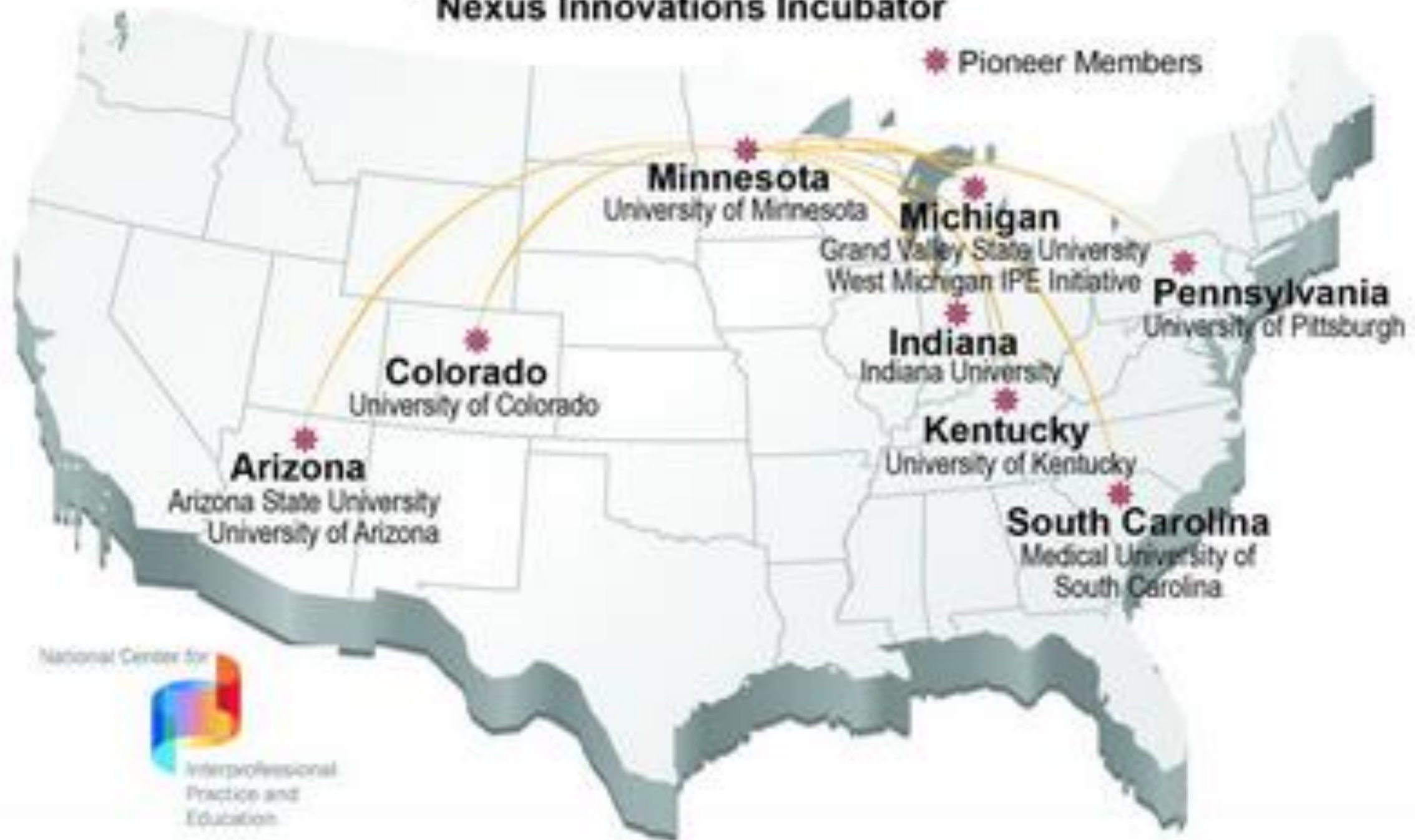
- Payment models which support and reward quality and team care will emerge.
- Systems are anticipating new incentive systems under the Affordable Care Act.
- Systems are asking about “right-sizing” and for innovative payment models.
- Physicians will lead change in medical education through the AMA.

## 3. Nexus Innovations Incubator

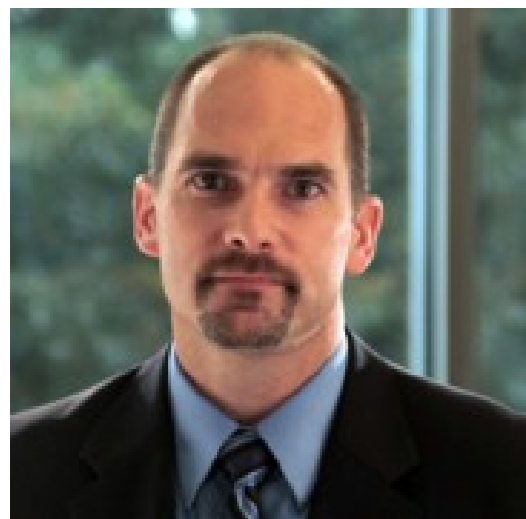
- Nexus Innovations Incubator is an applied testing laboratory focused on the triple aim—cost, patient experience and population health.
- Incubator members are partnerships between local care delivery and health professions education systems and seek to:
  1. Identify new competencies needed for health professionals.
  2. Test new organizational, care delivery and learning models in real-world settings.
  3. Identify, collect and analyze the metrics and data needed to build the evidence base for interprofessional practice and education.
  4. Develop, pilot and implement a curriculum for collaborative care.
  5. Train local staff as community evaluators, building the capacity for data collection and ongoing evaluation.



## National Center for Interprofessional Practice and Education Nexus Innovations Incubator



- Community-led, fully searchable online source for information about interprofessional practice and education, from articles and images to videos and presentations.
- 700 members, share info, ask questions, showcase contributions to the field to enrich the growing worldwide community.
- Contributions need not be peer reviewed.
- Questions are just as valuable as answers.
- Impressive list of resources available through the Exchange.
- Create your profile today at [www.nexusIPE.org](http://www.nexusIPE.org)



## Dale Healey

DC, PhD

Dean - College of Undergraduate Health Sciences  
Northwestern Health Sciences University

[✉ Contact Me](#)

### Expertise and Interests

Massage Therapy

chiropractic

CAM

Complementary and Alternative Medicine

Integrated Medicine

### Twitter

[@dalehealey](#)

### LinkedIn

[www.linkedin.com/pub/dale-healey/8/399/429/](http://www.linkedin.com/pub/dale-healey/8/399/429/)

### My Website

[www.nwhealth.edu](http://www.nwhealth.edu)

### My Contributions

A listing of all contributions made to the National Center community.

## 5. CAM – Welcome but an Afterthought

- We were invited, welcomed and made to feel like an important part of the conversation.
- However, the focus is clearly on the mainstream health care educators and clinical environments.
- Visible and divisive fringe elements of CAM (past and present) continue to discredit us all and limit our participation in efforts of this nature.

- Embrace Evidence-Informed Practice
- Embrace Interdisciplinary Education
- Embrace Interdisciplinary Care Models
- Participate whenever possible

- Student-run integrative health care model
- Located in the Pillsbury House which offers affordable day care, health education and HIV outreach, after school youth programs, professional theater and other arts-integrated human services.
- Successful (but not easy) partnering with health care educational institutions specializing in a variety of fields (medicine, psychology, nursing and health coaching)

- Serves patients in the Powderhorn Park neighborhood and surrounding communities.
- Services are free and open to the public.
- New patients must come in during clinic hours to pick up paperwork and schedule their intake visit.
- Clinic is open Monday and Wednesday evenings and Saturday mornings.

## Pillsbury House Integrated Health Clinic

### Appointments

Schedule an Appointment  
Your First Visit

### Services

### Supervising Clinicians

### About the Integrated Health Clinic



Research Study  
Volunteers Needed →

## Pillsbury House Integrated Health Clinic



The Pillsbury House Integrated Health Clinic provides chiropractic care, acupuncture, massage therapy, medical services, counseling and health coaching. It serves patients in the Powderhorn Park neighborhood and surrounding communities. Services are free and open to the public. To make an appointment, stop by during clinic hours. [Learn more →](#)

### Hours

Wed: 5:30 p.m.-9:30 p.m.  
Sat: 8:30 a.m.-12:30 p.m.  
*Return patients only:*  
Mon. 6:00 p.m.-8:00 p.m.

### Contact Us

612-787-3636  
For cancellations only

### Location

Pillsbury House 3rd floor  
3501 Chicago Ave. S.  
Minneapolis, MN 55407

### Directions



The Care You Receive  
Free, integrative health care with an individual approach to your health and well being.

[Learn more →](#)

## Pillsbury House

The Integrated Health Clinic is located on the 3rd floor of the Pillsbury House + Theater.

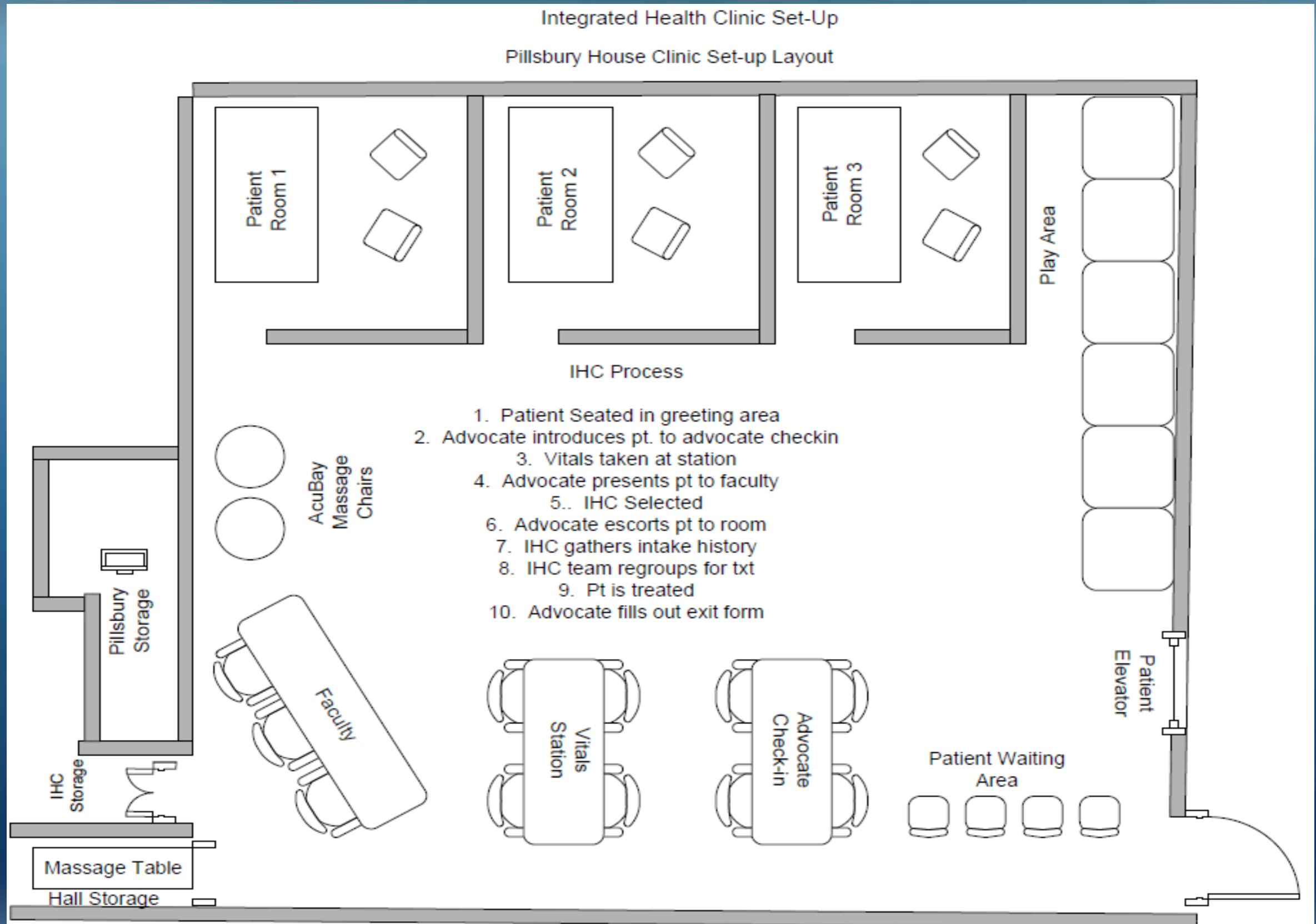
Pillsbury House + Theater offers accessible programs and services, including:

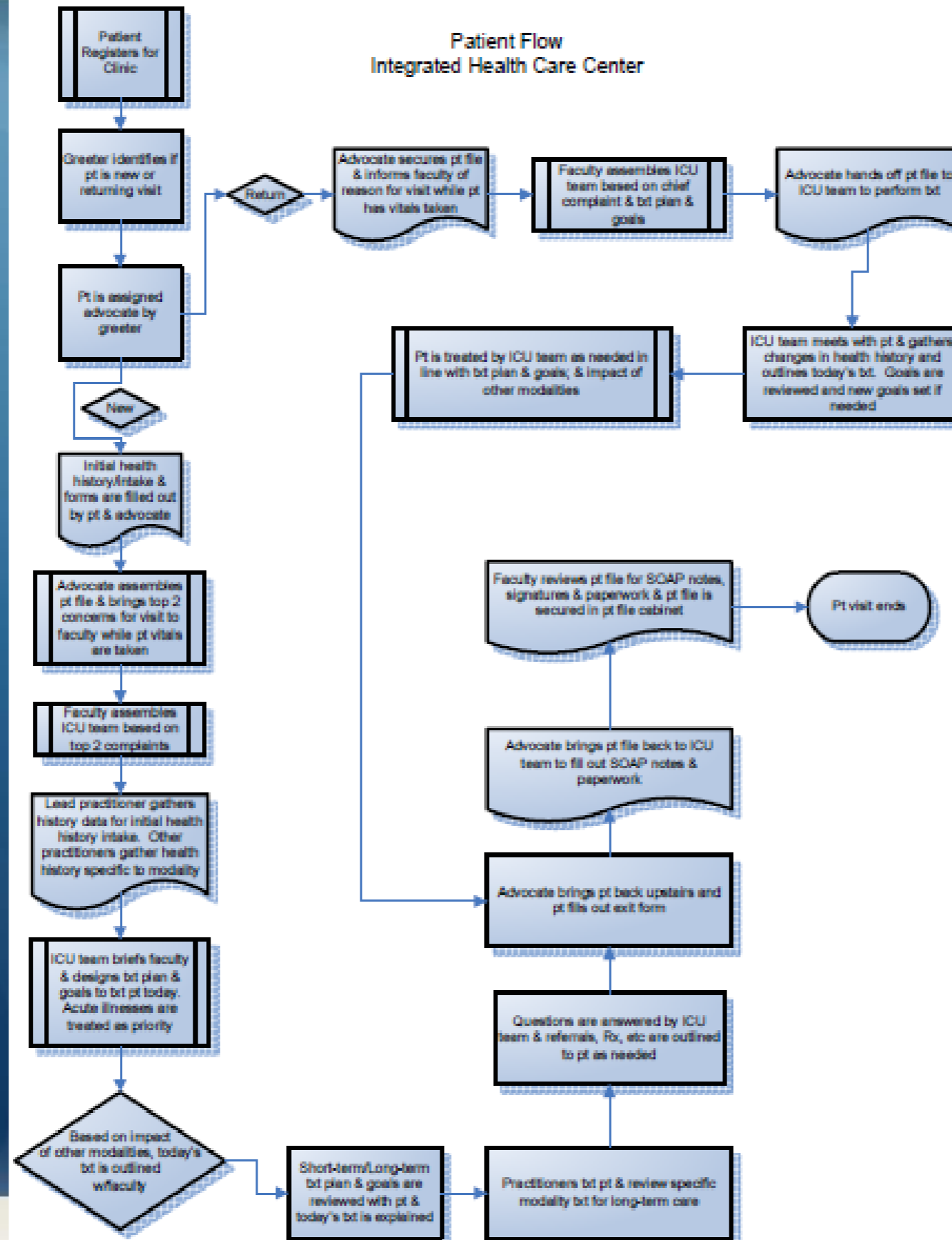


- Integrative care provided by student interns supervised by licensed faculty.
- Patient care is planned and delivered by a team of students and providers from several disciplines:
  - Chiropractic
  - Acupuncture
  - Massage therapy
  - Medicine
  - Psychology
  - Health coaching

- Exposure to:
  - Diversity (ethnic and socioeconomic)
  - Interprofessional Education
  - Diversity of acute and chronic conditions
  - Community-based practice setting
  - “Real world” Public Health issues
  - Mental health issues facing the community

- Patient care includes appropriate referrals to ensure that patients are connected with health care and social services that we cannot provide.
- We refer patients to other community clinics, specialty clinic, urgent care or emergency room, if necessary.





**By all measures, the Pillsbury House Integrated Health Clinic has been very successful and is an important teaching and learning tool for our students.**

## **Challenges:**

- 1. Maintaining a focus on true integration among the disciplines.**
- 2. Not a financially sustainable model – perhaps payment models will need to catch up.**
- 3. Finding appropriate roles for all participants.**
- 4. Limited commitment from partner institutions.**